



KENTISBURY GRANGE

Welcome to your dream getaway...



A rare opportunity to own a stunning 2-bedroom lodge in heart of the North Devon countryside

Built in 1894, the award-winning Kentisbury Grange hotel is a Grade II listed Victorian manor house nestled in 7 acres of mature landscaped gardens and set against a picturesque backdrop of North Devon's rolling hills.

Our idyllic location on the edge of Exmoor National Park, with beautiful sandy beaches and quaint coastal towns and villages on the doorstep, makes us the ultimate all-year-round destination.

Make unforgettable memories with family and friends at Kentisbury Grange, whether you're staying for a weekend getaway, summer break or a magical Christmas and new year celebration.



Enjoy the highest standard of luxury resort living

Our open-plan, contemporary waterside lodges are bright, spacious and perfectly positioned throughout the grounds to make the most of the stunning views, including our water features and resident wildlife.

Each lodge has two bedrooms, two bathrooms, a living room, dining room and a fully equipped kitchen featuring high-end appliances, making meal preparation a breeze. The large bi-fold doors invite the outside in, allowing you to soak up the wonderful surroundings and truly immerse yourself in the tranquillity of the Grange.

Both bedrooms feature an en-suite bathroom, providing the perfect retreat after a long day exploring the countryside and there's even a TV to watch your favourite shows whilst relaxing in the bath.

When it's time to unwind, what could be better than soaking away the day in your very own hot tub on your private decked area. As a lodge owner, you'll have access to the award-winning Coach House restaurant and bar which serves breakfast, lunch, afternoon tea and dinner. Our team of talented chefs pride themselves on their use of the fantastic local seafood and seasonal organic produce that the South West has to offer.





Take in the stunning scenery and beautiful coastline

Exmoor National Park offers a wide range of activities including hiking, cycling, horse riding, fishing and wildlife watching, and is also home to a wide variety of flora and fauna including rare species such as the Exmoor pony and native red deer.

With its stunning vistas and serene atmosphere, you'll find your perfect spot to unwind and reconnect with nature.

North Devon is renowned for its stunning beaches and it's not difficult to see why. From long stretches of unspoilt golden sands to hidden coves and rugged cliffs, the coastline is truly breathtaking.

Whether you prefer to swim, paddleboard or simply relax in the sun, there's something to entertain the whole family.



If you're feeling adventurous, you'll enjoy one of the many walks along the South West Coast Path which spans the entire length of the North Devon coastline and offers some of the most spectacular views in the UK.

Our friendly team are on hand to offer help and advice about the local area whilst you settle into your new home-from-home.



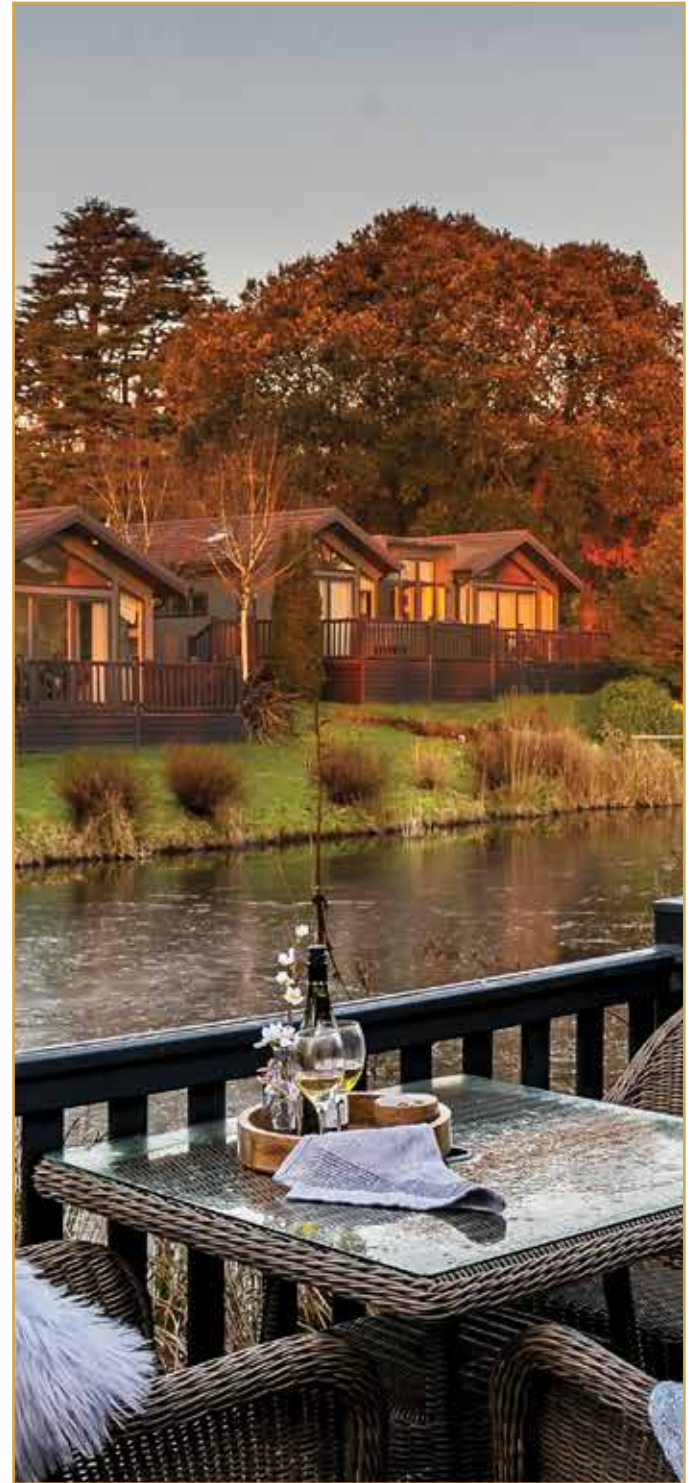
Use your lodge all year round or rent it out and generate income

With our 365-day-a-year flexible holiday lease, you'll remain in complete control of when you decide to use your lodge and when you rent it out, allowing you to enjoy all the benefits of ownership whilst still earning money from your investment.

You'll also benefit from competitive annual ground rent with an initial 35-year licence period, with the option to extend.

If you choose to rent out your lodge, we'll take care of bookings, cleaning and changeovers, providing total peace of mind whilst you reap the rewards of your rental income.















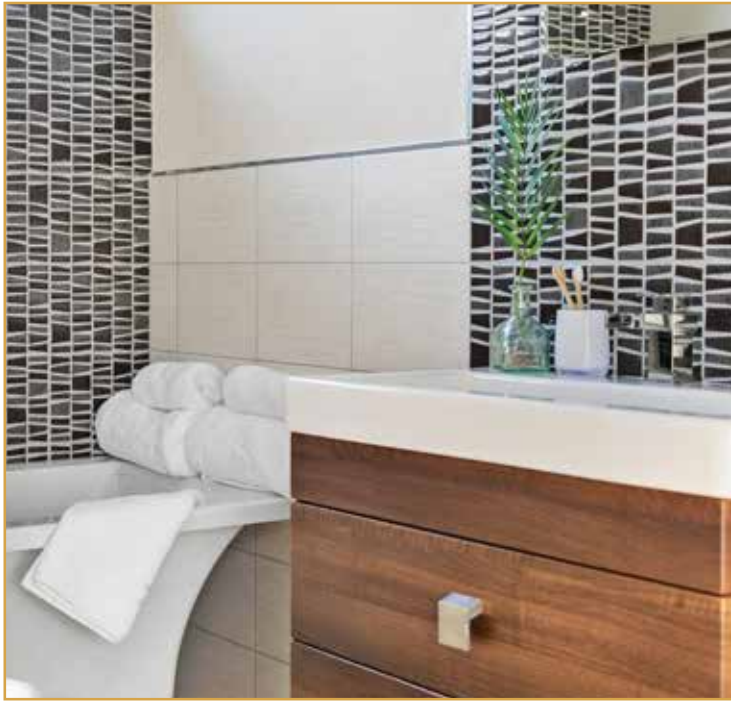


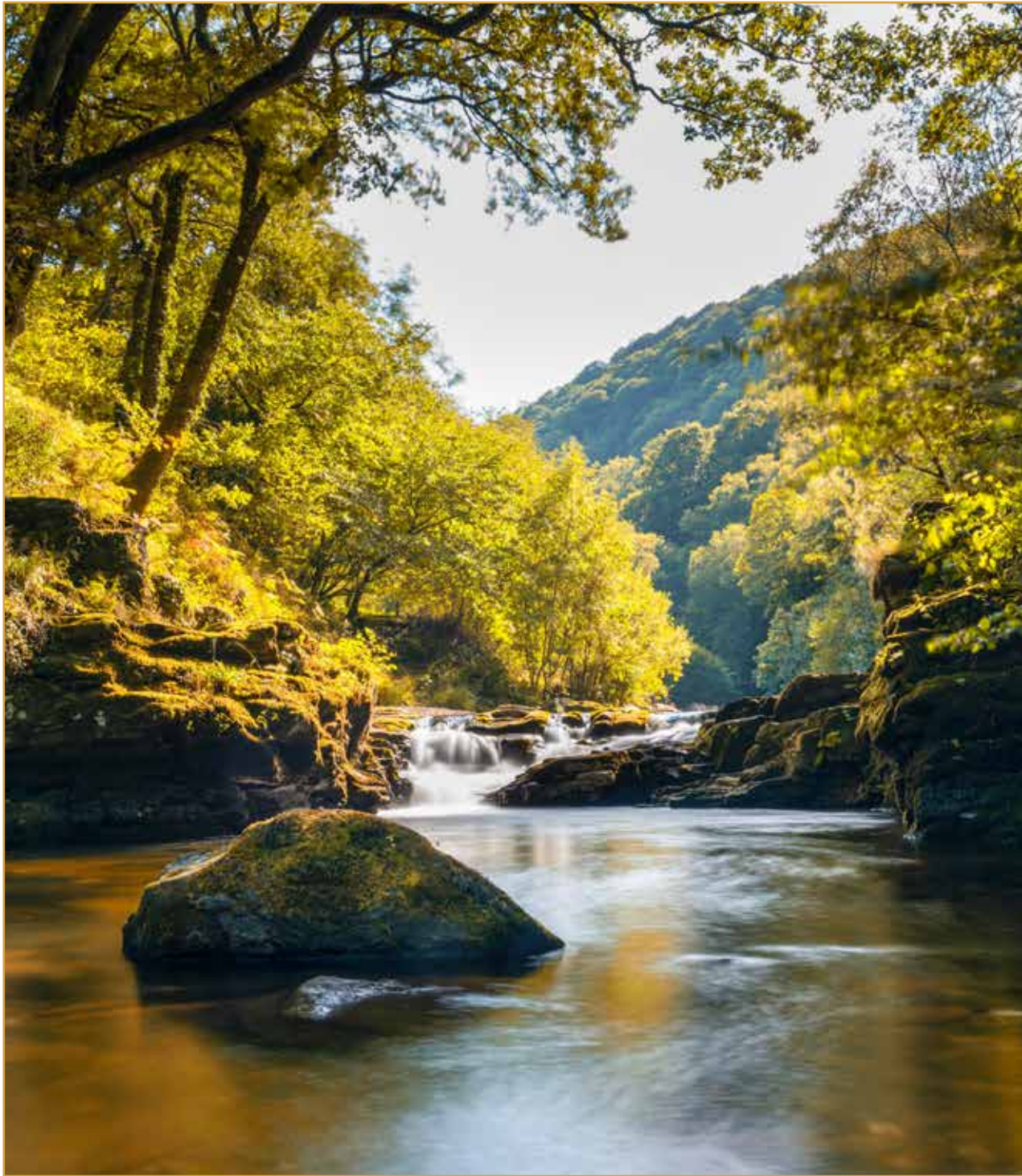












Lodge Prices

Prices indicated are for illustrative purposes at the time of publication and are subject to change depending on market conditions and bookings accepted.

● LODGES (H) HOTEL (R) RESTAURANT



LODGE NUMBERS	SELLING PRICE
06	£149,950
07	£149,950
10	£149,950
11	£149,950
15	£129,950
16	£139,950
17	£141,950
18	£141,950
23	£146,950



KENTISBURY GRANGE

Get in touch or scan the QR code to learn more



Website: www.kentisburygrange.com/lodgesales

Address: Kentisbury, North Devon EX31 4NL

Email: stephenbrown@kentisburygrange.com

Telephone: 0800 0983897

